

DIGITAL INDICATORS (FOR HIGH SPEED MOVING OF SPINDLE)

ATTENTION: LARGE POWER CONSUMPTION,
A BATTERY CAN BE USED FOR ABOUT HALF A YEAR

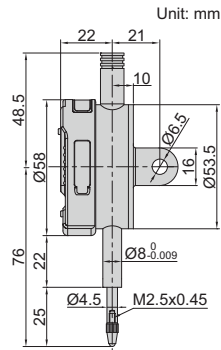
spindle lift knob is included



- For high speed moving of spindle
- Large power consumption, a battery can be used for about half a year
- Button function: on/off, inch/mm, zero, data preset, change measuring direction, absolute/incremental measurement
- Keep preset data in memory after restart
- CR2032 battery, automatic power off
- Data output
- Optional accessory: data output cable (code **7315-50M**, **7302-40M**, **7305-40M**), backs (page 164~165), contact points (page 161~163)

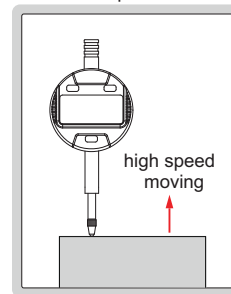


2120-10



2120-10
2120-101

for high speed moving
of spindle



Resolution 0.001mm/0.00005"

Code	Range	Accuracy	Hysteresis	Remark
2120-101F*	12.7mm/0.5"	5µm	2µm	flat back
2120-101*	12.7mm/0.5"	5µm	2µm	lug back

Resolution 0.01mm/0.0005"

Code	Range	Accuracy	Hysteresis	Remark
2120-10F*	12.7mm/0.5"	20µm	10µm	flat back
2120-10*	12.7mm/0.5"	20µm	10µm	lug back

* Supplied with manufacturer inspection certificate traceable to NIST USA