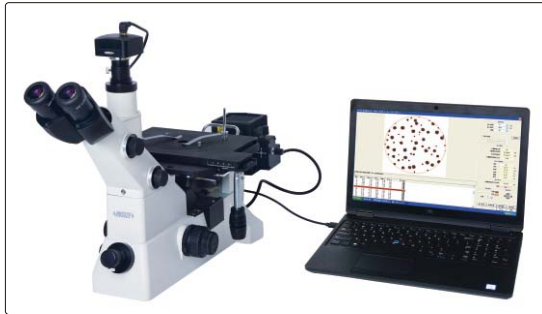


METALLURGICAL ANALYSIS SOFTWARE AND CAMERA CODE ISM-MAS100

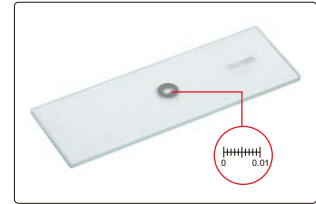
- More than 100 standards (ISO, ASTM, JIS, etc.)
- For metallurgical microscopes
- The camera can be inserted into the eyepiece tube or camera connector of microscopes
- Metallurgical analysis software is included, which can make comparative analysis, measurement and evaluation of various materials



application



software CD
(included)



glass calibration rule
(included, graduation 0.01mm)

metallurgical analysis software (included)

tool bar

gallery

This software can be used with variety of metallurgical microscopes for acquisition, processing, analysis, report generation of metallurgical images

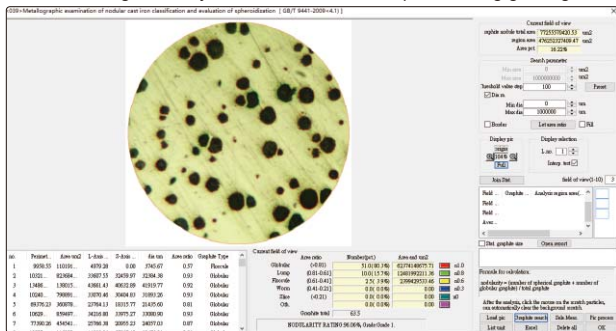
metallurgical module list

Select autoAnalysis Item

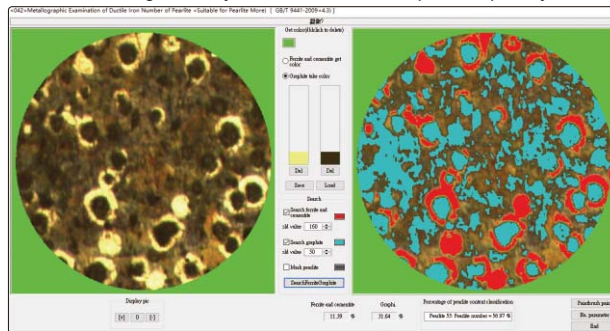
- [001] METHOD OF AVERAGE GRAIN SIZE, AREA OF METAL.....
- [002] METAL AVERAGE GRAIN SIZE CUTTING POINT METHOD.....
- [003] METAL AVERAGE GRAIN SIZE COMPARISON METHOD.....
- [004] Details of Average Grain Size Testing for Other Metals and Alloys.....
- [005] Standard for Dual Grain Size Characterization Test Method Area Fraction Evaluation Comparison Chart.....
- [006] Standard for Dual Grain Size Characterization Test Method_01. Micrographs of Dual Grain Size Types.....
- [007] Standard for Dual Grain Size Characterization Test Method_21. Micrographs of Dual Grain Size Types.....
- [008] Standard for Dual Grain Size Characterization Test Method_22. Application of Statistical Program for Determining Grain Size Distribution.....
- [009] steel apparent grain size of micrographic estimating(transverse method) EN.....
- [010] steel apparent grain size of micrographic estimating(transverse method) EN.....
- [011] determination of nonmetallic inclusion content in steel by standard grading diagram.....
- [012] Evaluation Method of Inclusion Content in Steel, methodB (fourst field of view method).....
- [013] Evaluation Method of Inclusion Content in Steel, methodB (Low Inclusion Content Method).....
- [014] Evaluation Method of Inclusion Content in Steel, methodE.....
- [015] Metallurgical examination method. Microscopic examination of non-metallic inclusions in high quality steel by metallographic diagram.....
- [016] Metallurgical examination of precious metal cuprous oxide.....
- [017] determination of decarburization depth of steel.....
- [018] DISTRIBUTION OF FERRITE GRAIN SIZE OF LOW CARBON STEEL COIL ROLLED SHEET GRAIN Elongation.....
- [019] determination of Phase Area Content of Stainless Steel.....
- [020] Metallurgical Examination of Gray Cast Iron Graphite Distribution Shape.....
- [021] Metallurgical Examination of Gray Cast Iron Graphite Length (Manual Analysis).....
- [022] Metallurgical Inspection of Gray Cast Iron Graphite Length (Automatic Analysis).....
- [023] Metallurgical Examination of Gray Cast Iron Number of Pearlite.....
- [024] Metallurgical Examination of Gray Cast Iron Number of Carbides.....
- [025] Metallurgical Examination of Gray Cast Iron Number of Phosphorus Eutectic.....
- [026] Metallurgical Examination of Gray Cast Iron Determination of the Number of Eutectic Groups of Cast Iron.....
- [027] Metallurgical examination of gray cast iron Phosphorus eutectic type etc.....
- [028] Quantitative metallurgical determination.....
- [029] Free cementite.....
- [030] Pearlite in Low Carbon Deformed Steel.....
- [031] Zonal tissue.....
- [032] Manganese tissue.....
- [033] Microstructure Assessment of Steel Calculation of Troostite Content.....
- [034] Metallurgical Martensite Needle Length Rating of Carburized Gear For Automobile.....
- [035] Metallurgical Carbide Rating of Carburized Gears for Automobile.....
- [036] Metallurgical Retained Austenite Rating of Carburized Gears for Automobile.....

[Multi-module grad] [Clear all] [OK] [Cancel]

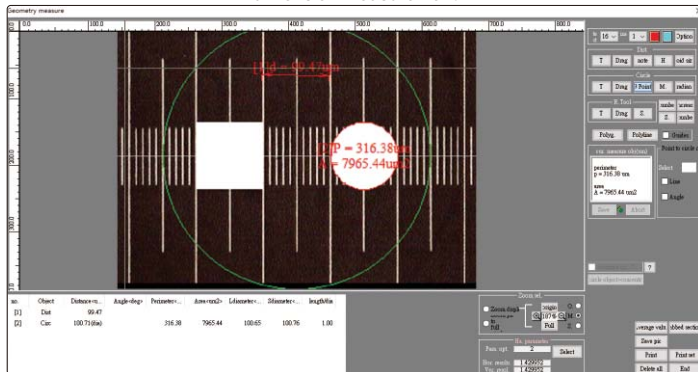
metallurgical analysis of ductile cast iron-spheroidizing grading



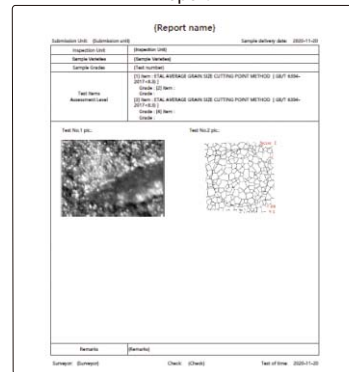
metallurgical analysis of ductile cast iron-pearlite quantity



dimension measurement



report



focus stacking

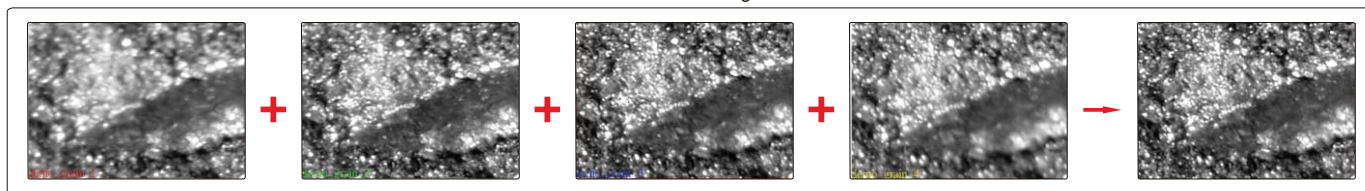
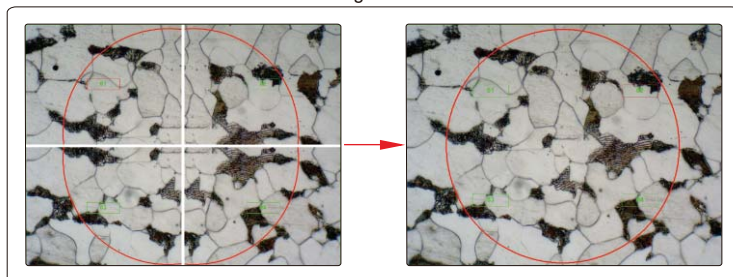
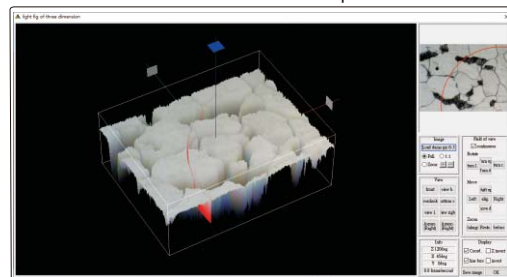


image stitch



three dimension map



SPECIFICATION

Sensor	1/2.8" CMOS
Pixel	3.1M
Resolution	2048×1536
Frame rate	10fps
Exposure	manual or automatic, adjustable exposure time
Power supply	USB port
Weight	400g

STANDAER DELIVERY IS

Camera (USB cable included)	1 pc
Software	1 pc
Glass calibration rule (graduation 0.01mm)	1 pc