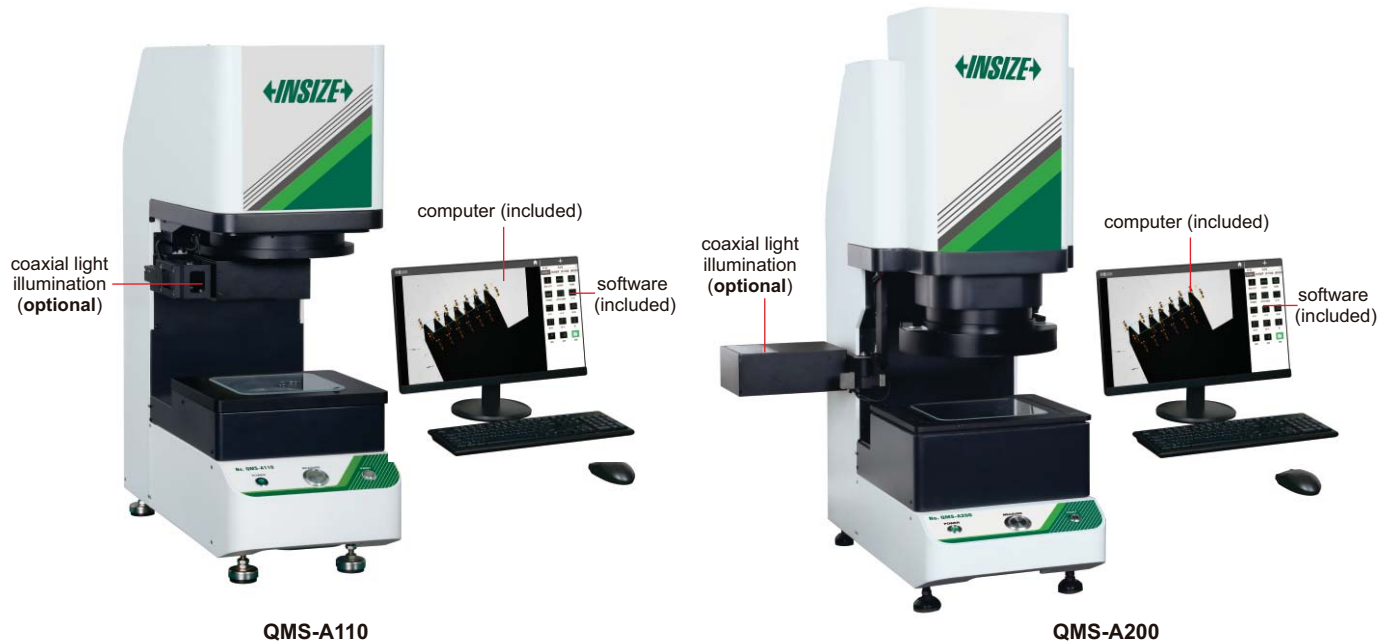


QUICK MEASUREMENT SYSTEMS (WITHOUT STITCHING)



QMS-A110

QMS-A200

SPECIFICATION

Code	QMS-A110	QMS-A200	
Optical lens	Low-distortion lens, single-field telecentric Φ100mm	Dual-field dual-telecentric low-distortion lens wide view field: Φ150mm small view field: Φ50mm	
View field range	100×80mm	wide view field 150×110mm	small view field 50×35mm
Measurement range(X×Y)	98×78mm	148×108mm	48×33mm
Measurement accuracy	±3μm ^①	±5μm ^②	±2μm ^③
Repeatability	±1μm	±1μm	±0.5μm
Magnification	3.5X	1.9X	5.75X
Depth of field	5.3mm	9mm	4mm
Single pixel size	17.3μm	38.5μm	12.8μm
Z axis travel range	75mm	75mm	
Glass stage size	150×150mm	175×175mm	
Max. weight of workpiece	5kg		
Measurement time	<2s		
Measurement data	2D measurement		
Power supply	220V, 50Hz, 600W		
Illumination system	back light	telecentric illuminator, green light	
	ring light	4-zone circular white high light circular(directional) low-angle green light(electric)	
	coaxial light(optional)	vertical illuminator, white light	
Computer	CPU: I3-8100, 8G RAM, 1T HDD	CPU: I5-4670, 8G RAM, 128G SSD+1T HDD	
Environmental requirement	Temperature: 20°C±2°C, relative humidity: 30%~80%, vibration: <0.002g, less than 15Hz		
Dimension (L×W×H)	560×234×685mm	638×336×885mm	
Weight	45kg	60kg	

- * The optimum temperature is $20^{\circ}\text{C}\pm 1^{\circ}\text{C}$
 - ① Within $80\times 64\text{mm}$, on focal position and environment temperature at $+20^{\circ}\text{C}\pm 1^{\circ}\text{C}$
 - ② Within $120\times 88\text{mm}$, on focal position and environment temperature at $+20^{\circ}\text{C}\pm 1^{\circ}\text{C}$
 - ③ Within $40\times 28\text{mm}$, on focal position and environment temperature at $+20^{\circ}\text{C}\pm 1^{\circ}\text{C}$

- One or more workpieces can be measured by one step operation
- Place workpieces at any position
- Focus and measure automatically

STANDARD DELIVERY

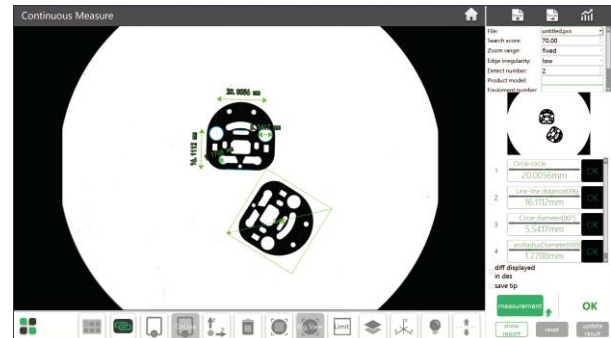
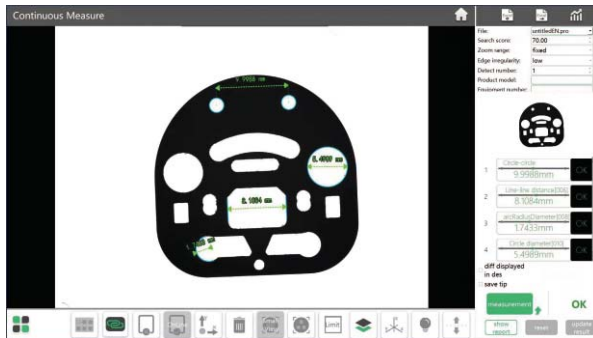
Main unit	1 pc
Computer	1 pc
Software	1 pc

OPTIONAL ACCESSORY

Coaxial light illumination	QMS-23-A1(for QMS-A110)
	QMS-23-A2(for QMS-A200)
Data transmission function of software	QMS-23-D
CAD import function of software	QMS-23-C
Foot-switch	QMS-43-FS

Software (included)

- Automatically measure widths, holes, rings, angles at the same time, simple and efficient.



- Measuring result can be stored automatically. OK items and NG items can be counted automatically.

