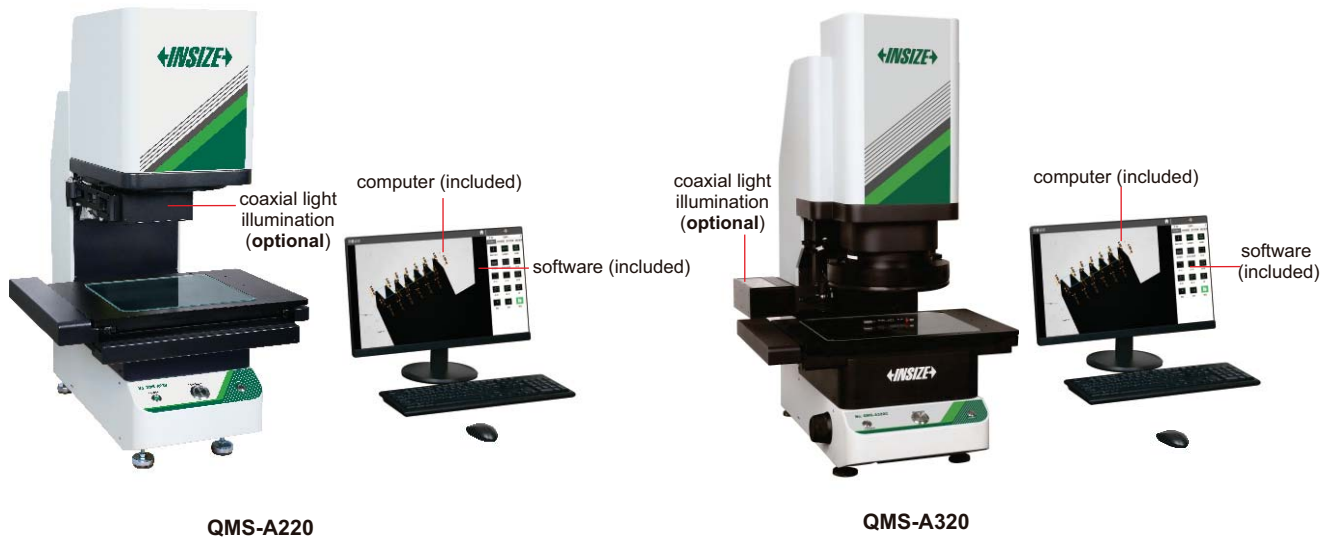


QUICK MEASUREMENT SYSTEMS (WITH STITCHING)



SPECIFICATION

Code		QMS-A220		QMS-A315		QMS-A320	
Optical lens		Dual-field dual-telecentric low-distortion lens					
		wide view field: $\Phi 100\text{mm}$ small view field: $\Phi 25\text{mm}$		wide view field: $\Phi 100\text{mm}$ small view field: $\Phi 25\text{mm}$		wide view field: $\Phi 150\text{mm}$ small view field: $\Phi 50\text{mm}$	
View field range		wide view field	small view field	wide view field	small view field	wide view field	small view field
		93×62mm	30×20mm	100×80mm	25×20mm	150×110mm	50×35mm
Measurement range		200×200mm	130×130mm	300×200mm	230×130mm	300×210mm	200×135mm
Measurement accuracy	without splicing	$\pm 3\mu\text{m}$ ^①	$\pm 1\mu\text{m}$ ^②	$\pm 3\mu\text{m}$ ^①	$\pm 1\mu\text{m}$ ^②	$\pm 5\mu\text{m}$ ^③	$\pm 2\mu\text{m}$ ^④
	with splicing	$\pm(5+0.02L)\mu\text{m}$ ^⑤	$\pm(3+0.02L)\mu\text{m}$ ^⑥	$\pm(5+0.02L)\mu\text{m}$ ^⑦	$\pm(3+0.02L)\mu\text{m}$ ^⑧	$\pm(7+0.02L)\mu\text{m}$ ^⑨	$\pm(4+0.02L)\mu\text{m}$ ^⑩
Repeatability	without splicing	$\pm 1\mu\text{m}$	$\pm 0.5\mu\text{m}$	$\pm 1\mu\text{m}$	$\pm 0.5\mu\text{m}$	$\pm 1\mu\text{m}$	$\pm 0.5\mu\text{m}$
	with splicing	$\pm 2\mu\text{m}$	$\pm 1.5\mu\text{m}$	$\pm 2\mu\text{m}$	$\pm 1.5\mu\text{m}$	$\pm 2\mu\text{m}$	$\pm 1.5\mu\text{m}$
Max.weight of workpiece		5kg					
Measurement time		<2s					
Measurement data		2D measurement					
Power supply		220V, 50Hz, 600W					
Illumination system	back light	telecentric illuminator, green light					
	ring light	4-zone circular white high light circular(directional) low-angle green light(electric)					
	coaxial light (optional)	vertical illuminator, white light					
Environmental requirement		Temperature: $20^{\circ}\text{C}\pm 2^{\circ}\text{C}$, relative humidity: 30%~80%, vibration: <0.002g, less than 15Hz					
Dimension (L×W×H)		532×480×766mm		532×497×766mm		669×510×883mm	
Weight		50kg		60kg		68kg	

* The optimum temperature is 20°C±1°C

- ① Within 80×64mm, on focal position and environment temperature at 20°C±1°C
- ② Within 20×16mm, on focal position and environment temperature at 20°C±1°C
- ③ Within 120×88mm, on focal position and environment temperature at 20°C±1°C
- ④ Within 40×28mm, on focal position and environment temperature at 20°C±1°C
- ⑤ Within 180×180mm, on focal position, environment temperature at 20°C±1°C, and workpiece is less than 2kg, L is the travel of stage
- ⑥ Within 117×117mm, on focal position, environment temperature at 20°C±1°C, and workpiece is less than 2kg, L is the travel of stage
- ⑦ Within 270×180mm, on focal position, environment temperature at 20°C±1°C, and workpiece is less than 2kg, L is the travel of stage
- ⑧ Within 207×117mm, on focal position, environment temperature at 20°C±1°C, and workpiece is less than 2kg, L is the travel of stage
- ⑨ Within 270×189mm, on focal position, environment temperature at 20°C±1°C, and workpiece is less than 2kg, L is the travel of stage
- ⑩ Within 180×121mm, on focal position, environment temperature at 20°C±1°C, and workpiece is less than 2kg, L is the travel of stage

- One or more workpieces can be measured by one step operation
- Place workpieces at any position
- Focus and measure automatically

STANDARD DELIVERY

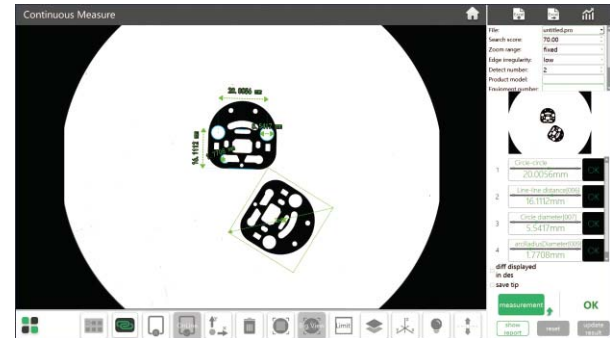
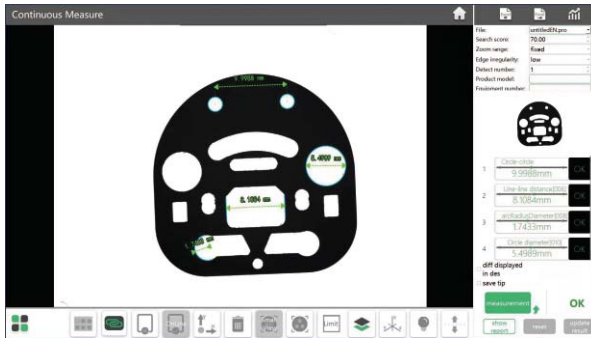
Main unit	1 pc
Computer	1 pc
Software	1 pc

OPTIONAL ACCESSORY

Coaxial light illumination	QMS-23-A3(for QMS-A220, QMS-A315)
	QMS-23-A4(for QMS-A320)
Data transmission function of software	QMS-23-D1
CAD import function of software	QMS-23-C1
Laser sensor	QMS-43-SJ1(for QMS-A315)
Foot-switch	QMS-43-FS1

Software (included)

- Automatically measure widths, holes, rings, angles at the same time, simple and efficient.



- Measuring result can be stored automatically. OK items and NG items can be counted automatically.

