

# HIGH-DEFINITION AUTO FOCUS DIGITAL MICROSCOPE (LARGE VIEW FIELD) CODE 5320-AF410

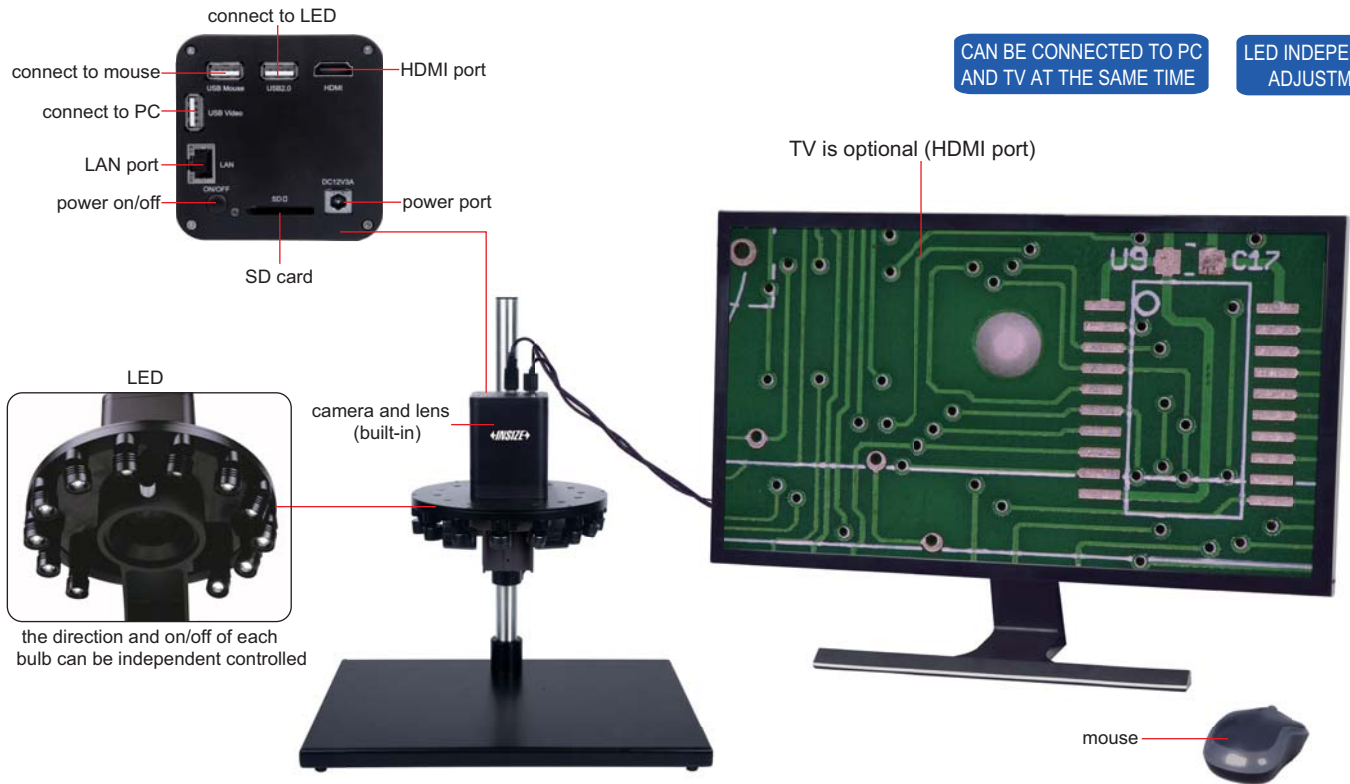
AUTO FOCUS

TAKE PICTURES  
AND VIDEOS

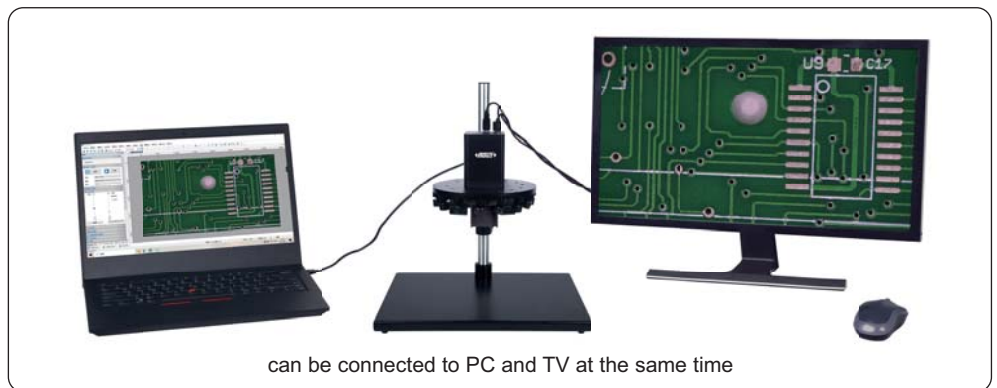
MEASUREMENT

CAN BE CONNECTED TO PC  
AND TV AT THE SAME TIME

LED INDEPENDENT  
ADJUSTMENT



- Auto focus camera
- Take pictures and videos
- Built-in measuring software
- Automatic exposure, sharpening, denoising and white balance
- 4K/1080P automatically switched by display resolution
- Display actual magnification
- Digital magnification
- Motorized light control
- Display cross hair and gridline



## SPECIFICATION

Magnification (on 28" TV)	2.4X~43.7X
View field	14.2×8~255×145mm
Auto focus distance	200~255mm
Sensor	1/2.8" CMOS
Pixel	8M
Resolution	3840×2160
Frame rate	30fps
Output	HDMI/USB/LAN
Power supply	power adapter
Dimension (L×W×H)	400×300×450mm
Weight	5.8kg

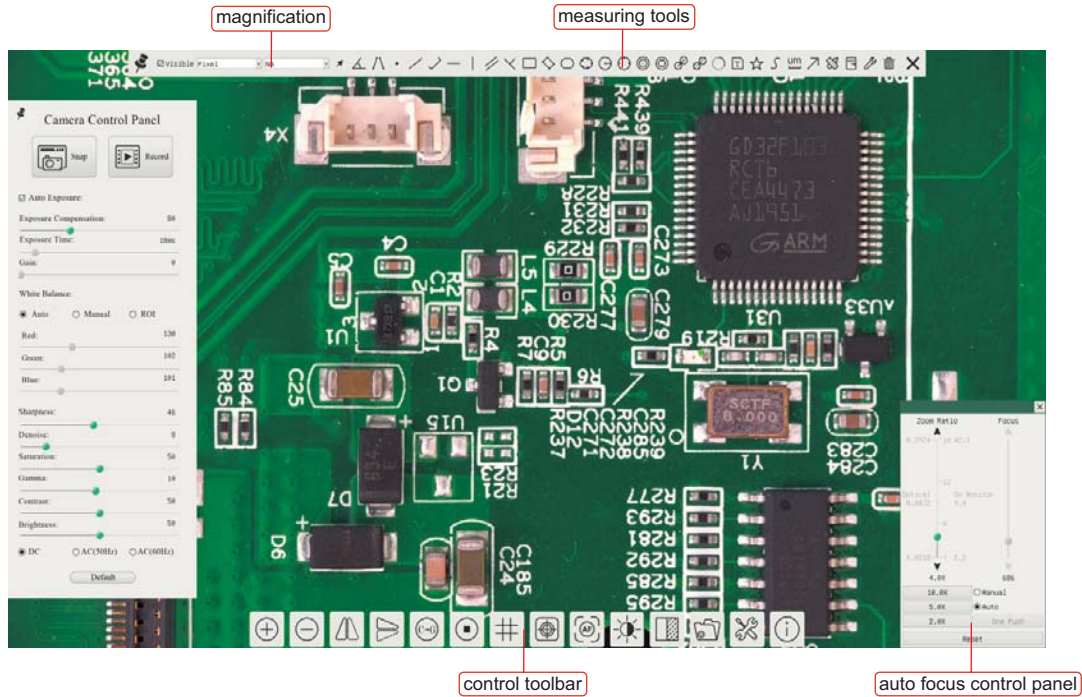
## STANDARD DELIVERY

Main unit (with stand)	1 pc
LED illumination	1 pc
32G memory card and holder	1 pc
Mouse	1 pc
HDMI cable	1 pc
USB 2.0 cable	1 pc
Power adapter	1 pc

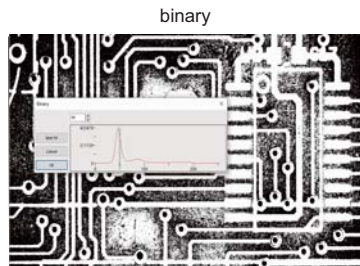
## MEASURING ACCURACY (ON 28" TV)

Optical magnification	Measuring accuracy
2X	±0.1mm
4X	±0.1mm
6X	±0.04mm
10X	±0.02mm
14X	±0.02mm
18X	±0.01mm

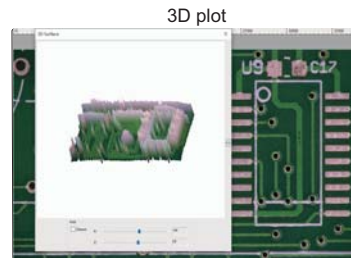
SOFTWARE FOR TV (INCLUDED)



PROFESSIONAL SOFTWARE (INCLUDED, FOR COMPUTER)



separate target and background

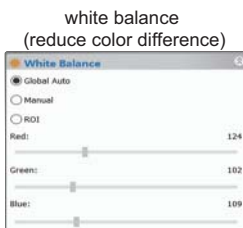
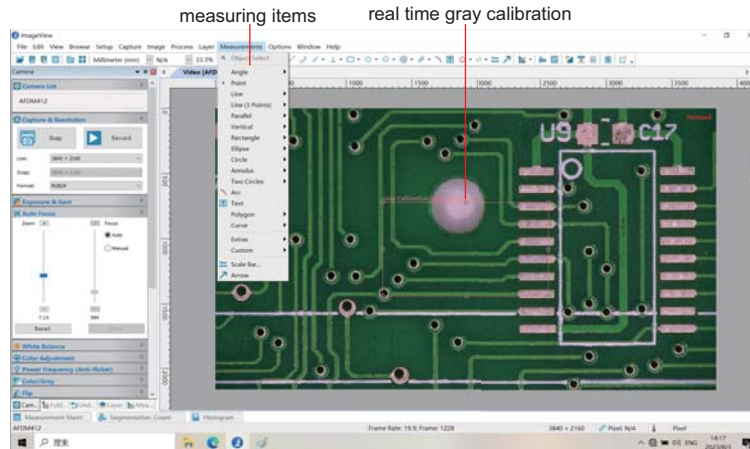


visualize the distribution of image brightness and color

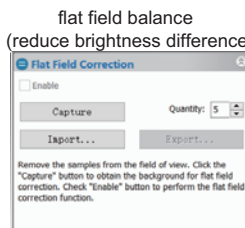
selectable resolution



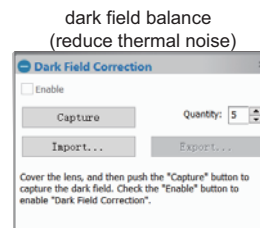
histogram (quantify the distribution of color and brightness)



white balance (reduce color difference)



flat field balance (reduce brightness difference)



dark field balance (reduce thermal noise)

The software can control image completely, including measurement, image stitching, image gray processing, RGB histogram observation, image color sampling, 3D plot (3D presentation of image intensity), image exposure, white balance, image bit depth, flat field correction and dark field correction, etc.