

LARGE SIZE QUICK MEASUREMENT SYSTEM CODE QMS-A450



- One or more workpieces can be measured by one step operation
- Place workpieces at any position
- Focus and measure automatically

SPECIFICATION

Optical lens		Dual-field dual-telecentric low-distortion lens	
Measurement range		wide view field	small view field
		500×400mm	430×350mm
Measurement Accuracy	without splicing	±3μm ^①	±1μm ^②
	with splicing	±(5+0.02L)μm ^③	±(3+0.02L)μm ^④
Repeatability	without splicing	±1μm	±0.5μm
	with splicing	±2μm	±1.5μm
Travel range(X×Y×Z)		410×340×250mm	
Magnification		3.6X	14.2X
Illumination system	transmission light	telecentric illuminator, green light	
	surface light	vertical illuminator, high angle ring white light	
		vertical illuminator, 4-zone low and medium angle ring white light(electric)	
coaxial light(optional)	vertical illuminator, circular(directional) green light(electric)		
Glass stage size		520×420mm	
Max. weight of workpiece		25kg	
Measurement time		<2s	
Measurement data		2D measurement	
Environmental requirement		temperature: 20°C±2°C, relative humidity: 30%~80%, vibration: <0.002g, less than 15Hz	
Power supply		220V, 50Hz, 1200W	
Dimension(L×W×H)		1060×824×1818mm	
Weight		800kg	

*The optimum temperature is 20°C±1°C

- ① Within $\Phi 73 \times 49\text{mm}$, on focal position and environment temperature at $+20^\circ\text{C} \pm 1^\circ\text{C}$
- ② Within $\Phi 16 \times 12\text{mm}$, on focal position and environment temperature at $+20^\circ\text{C} \pm 1^\circ\text{C}$
- ③ Within $\Phi 450 \times 360\text{mm}$, on focal position and environment temperature at $+20^\circ\text{C} \pm 1^\circ\text{C}$
- ④ Within $\Phi 387 \times 315\text{mm}$, on focal position and environment temperature at $+20^\circ\text{C} \pm 1^\circ\text{C}$

STANDARD DELIVERY

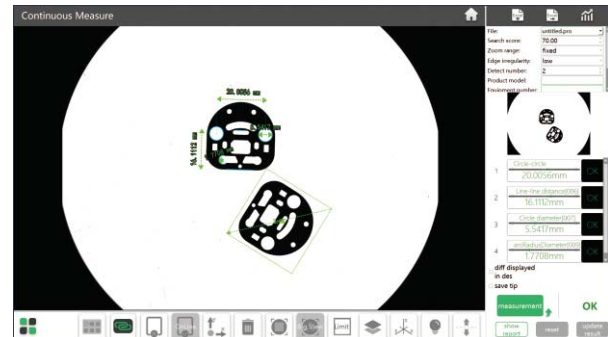
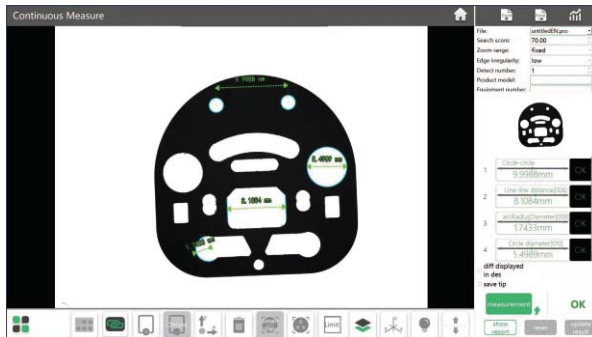
Main unit	1 pc
Computer	1 pc
Software	1 pc

OPTIONAL ACCESSORY

Coaxial light illumination	QMS-43-A1
Data transmission function of software	QMS-23-D1
CAD import function of software	QMS-23-C1
Laser sensor	QMS-43-SJ1
Foot-switch	QMS-43-FS1

Software(included)

- Automatically measure widths, holes, rings, angles at the same time, simple and efficient.



- Measuring result can be stored automatically. OK items and NG items can be counted automatically.

